



Quick Road, London, W4 2BU  
Guide Price £1,000,000

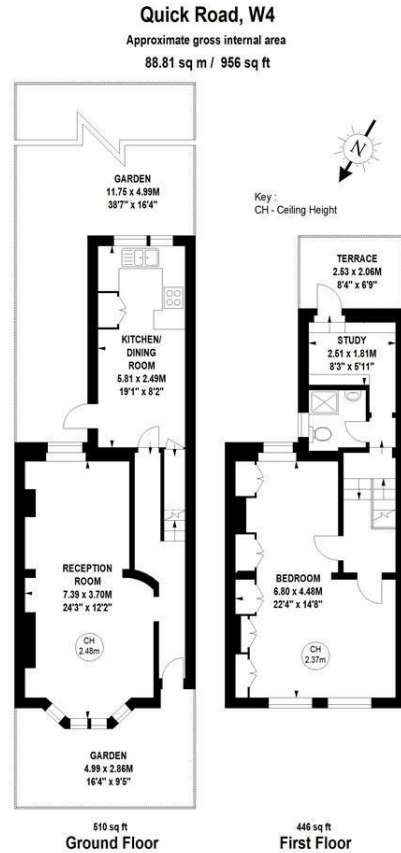
**WHITMAN & CO.**  
SALES · LETTINGS · COMMERCIAL

- Charming end of terrace
- South facing garden
- Potential to extend STTP
- Period cottage
- Sought after Glebe Estate location
- Close to Chiswick High Road

Tenure - Freehold  
 Local Authority - Hounslow  
 Council Tax - Band F

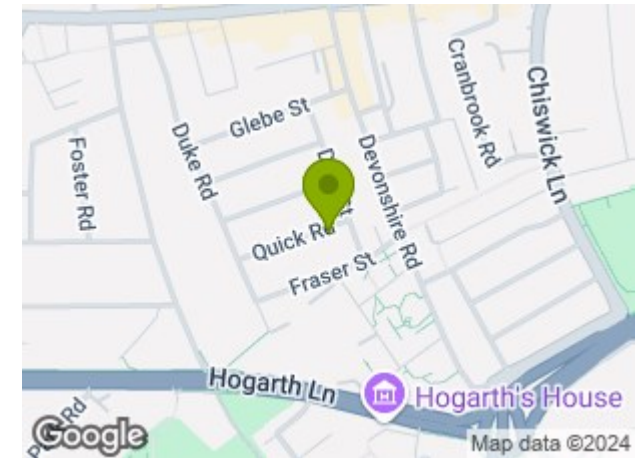
## THE PROPERTY

A charming end of terrace period cottage ideally located in the heart of the Glebe Estate with the added benefit of a roof terrace and South-facing garden. The front of the first floor has been transformed into a master suite with a second bedroom, South-facing roof terrace and shower room to the rear. The ground floor offers a 24' double reception room, 19' kitchen/breakfast room and 38' private South facing landscaped garden. The house has the potential to extend subject to the necessary consent. Ideally situated on this prestigious residential road offering close proximity to Turnham Green Tube Station, The River and the extensive facilities on Chiswick High Road.



The floor plan is not to scale and measurements and areas shown are approximate and therefore should be used for illustrative purposes only. The plan has been prepared in accordance with the RICS code of Measuring Practice and whilst we have confidence in the information produced, it must not be relied on. If there is any aspect of particular importance, you should carry out or commission your own inspection of the property.  
 Copyright of FeaturePRO.

## SITUATION



5-7 Turnham Green Terrace, Chiswick, London, W4 1RG

Tel 020 8747 8300

E-mail [sales@whitmanandco.com](mailto:sales@whitmanandco.com)

Website [www.whitmanandco.com](http://www.whitmanandco.com)



MISREPRESENTATION ACT 1967

Whitman & Co. for themselves and for the vendors give notice that these particulars do not constitute any part of, an offer of contract. All statements contained in these particulars are made without responsibility on the part of Whitman & Co. or the vendor. None of the statements contained in these particulars is to be relied upon as statements or representations of facts. Any intending purchaser must satisfy himself by inspection or otherwise as to the correctness of each of the statements contained in these particulars. The vendor does not make or give, and neither Whitman & Co. or any person in their employment has any authority to make or give, any representation or warranty whatever in relation to the property.